

Exploring the Kawa model: in conversation with Michael K Iwama



Our speakers today

- **Dr. Michael Iwama PhD OT(c)**

Professor & Chief Program Strategist
Occupational Therapy Doctorate
Division, School of Medicine, Duke
University

- **Emma Bryenton**

RCOT Learner Ambassador and
occupational therapy student at
Huddersfield University



Session outline

- Exploring the Kawa model presentation with Michael K Iwama
- Q&A with Michael and Emma

Please use the **Q&A function** at the bottom of your Zoom taskbar to ask questions, remember to include your name and your university too!



Occupational therapy's magnificent promise



to enable people, from all streams of life, to engage and participate in activities and processes of everyday life that matter.
to enable people to move toward their potential...

- Michael Iwama

Simply stated but so very difficult to deliver...

My river / journey; (so far)...



Okinawa
USA / JAPAN



Vancouver
CANADA



Victoria
CANADA



Tokyo
JAPAN



Kurashiki
JAPAN



Halifax
CANADA



Brisbane
AUSTRALIA



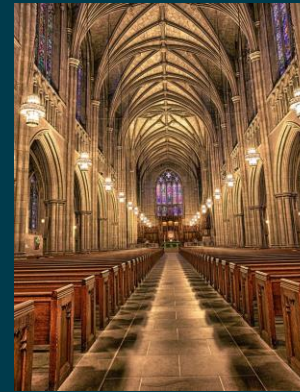
Toronto
CANADA



Augusta
USA



Boston
USA



Durham
USA

The biggest challenge facing OT today



Relevance...

Being Responsive to the Unique Conditions of our Clients' Day-to-Day Realities...



The client's "story" of daily life realities is
SACRED

Comprehending well-being on a continuum

Illness & Disability;
EMBODIED

Environmental
CONTEXT

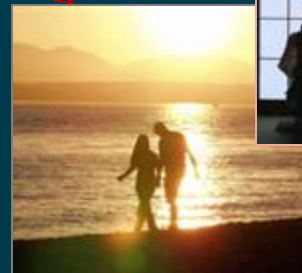
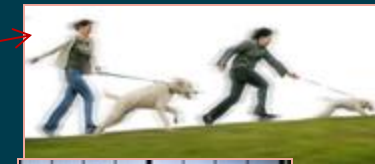
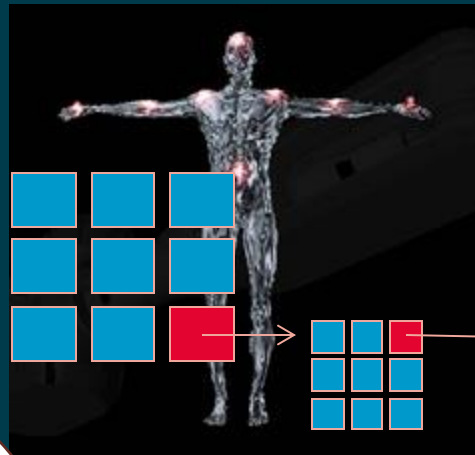
Standardised
and universal

Unique and
personal

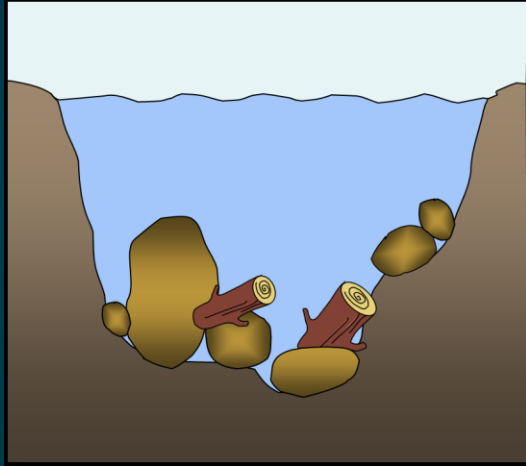
Anatomical
Issues
Pathological
Conditions
Functional
Impairment

Consequences
on Experiences
of Daily Life

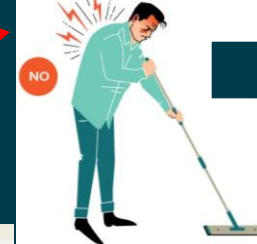
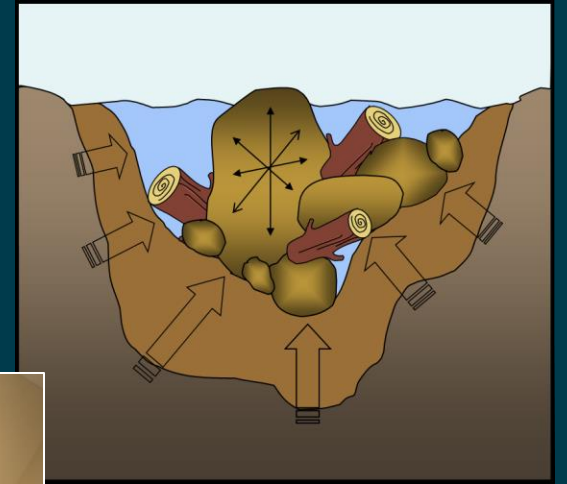
Holistic
Adaptational
Socio-
Cultural



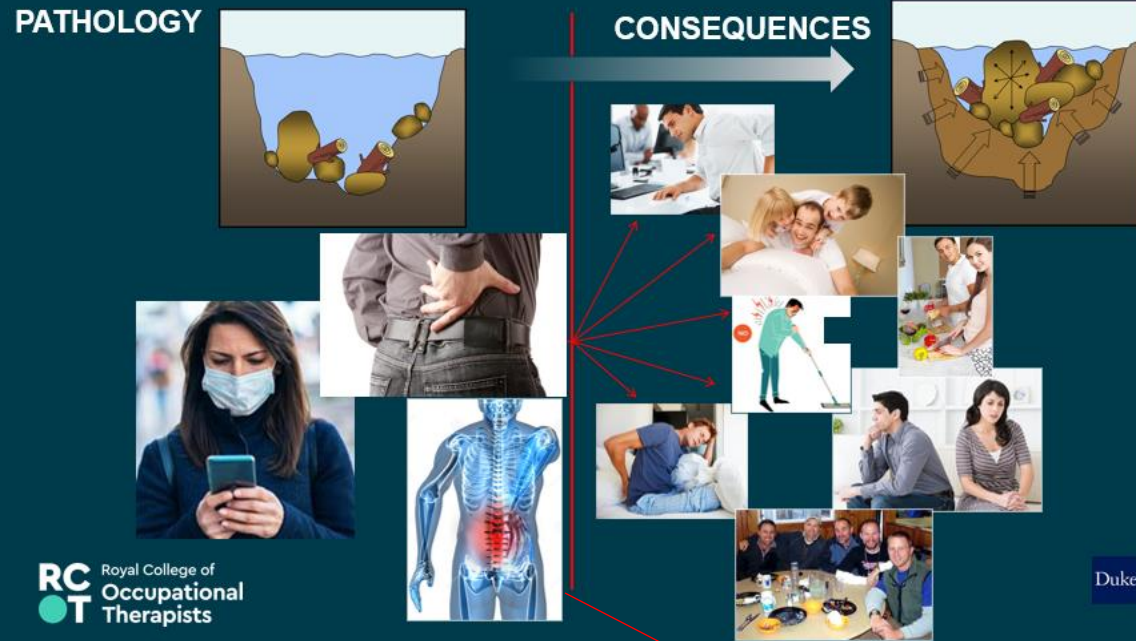
PATHOLOGY



CONSEQUENCES



Embodied, individual, pathology centered...



Embodied, environment, social, holistic, occupational...

Time	Activity	Priority	Role
6.30AM	Shower/Morning routine	2.5/3 3 being the most important	Professional/employee
7.00AM	Get kids ready for school, fix breakfast	3	Parent/caregiver
7.30AM			
8.00AM			
8.30AM			

Range of Motion, Pain, Strength, Coordination, Endurance, Pace...

Individual, Parent, Friend, Sibling, Worker, Nurse, Council Chief, Advocate, Nature Lover, Liverpool Fan, Fisherman, Motorbike Enthusiast, Photographer, Activist, Artist, Band Member, Pianist, Learner, Volunteer...

Meta-narratives & universal models



One size & style fits
all...

Regardless of diversity

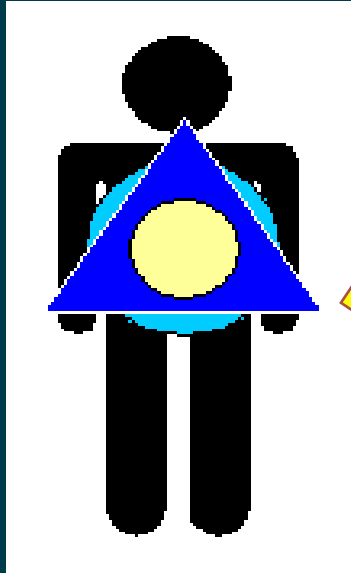
Cultural
hegemony?



Our theory, models , knowledge systems and practice can exclude a lot of people...

The grand narrative of occupational therapy & occupational science

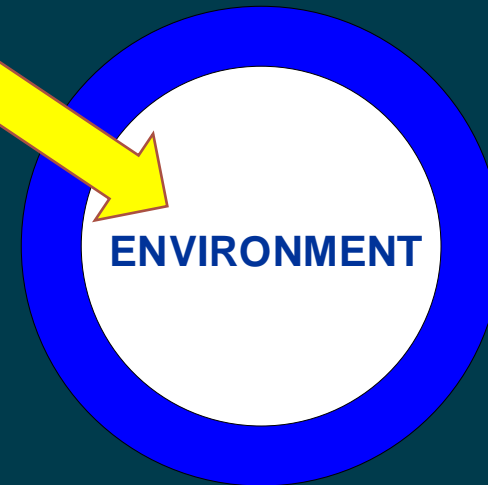
PERSON



Balance/Equilibrium is Asymmetrical

Individual exercises power over environment/circumstances...

“Independence” “Ability”
“Self Determinism” “Self Efficacy”



Why was the Kawa Model Developed?

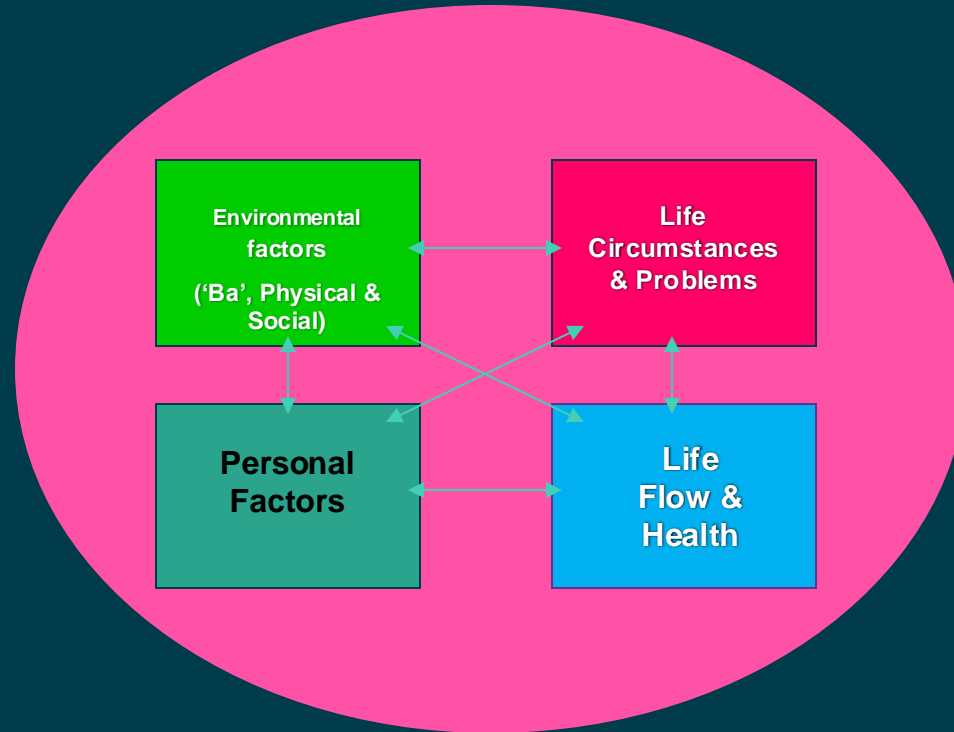
?



?

Both occupational therapists & clients could not understand theory & models in occupational therapy...

Life is like a sausage



Life is like a river...



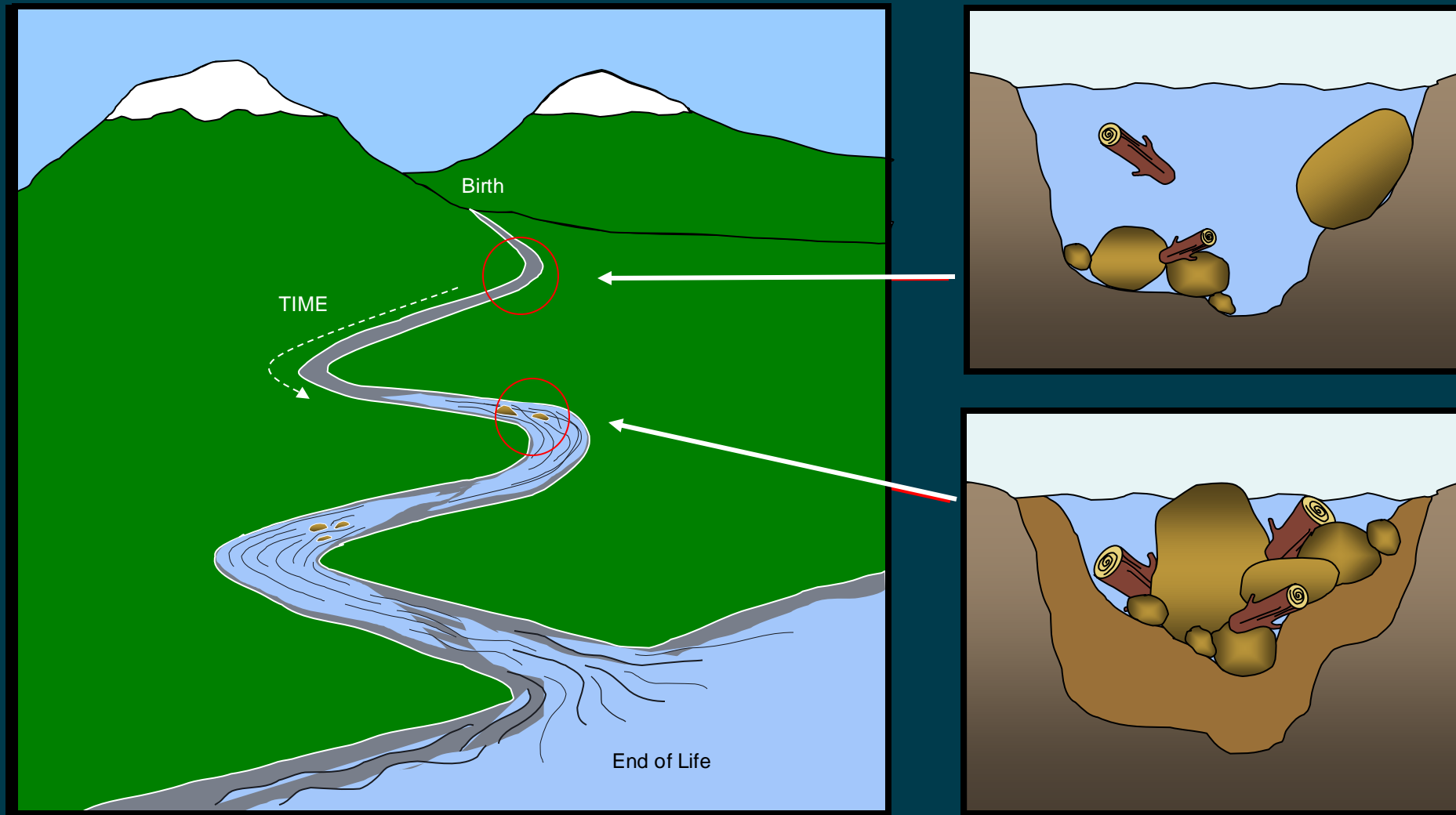
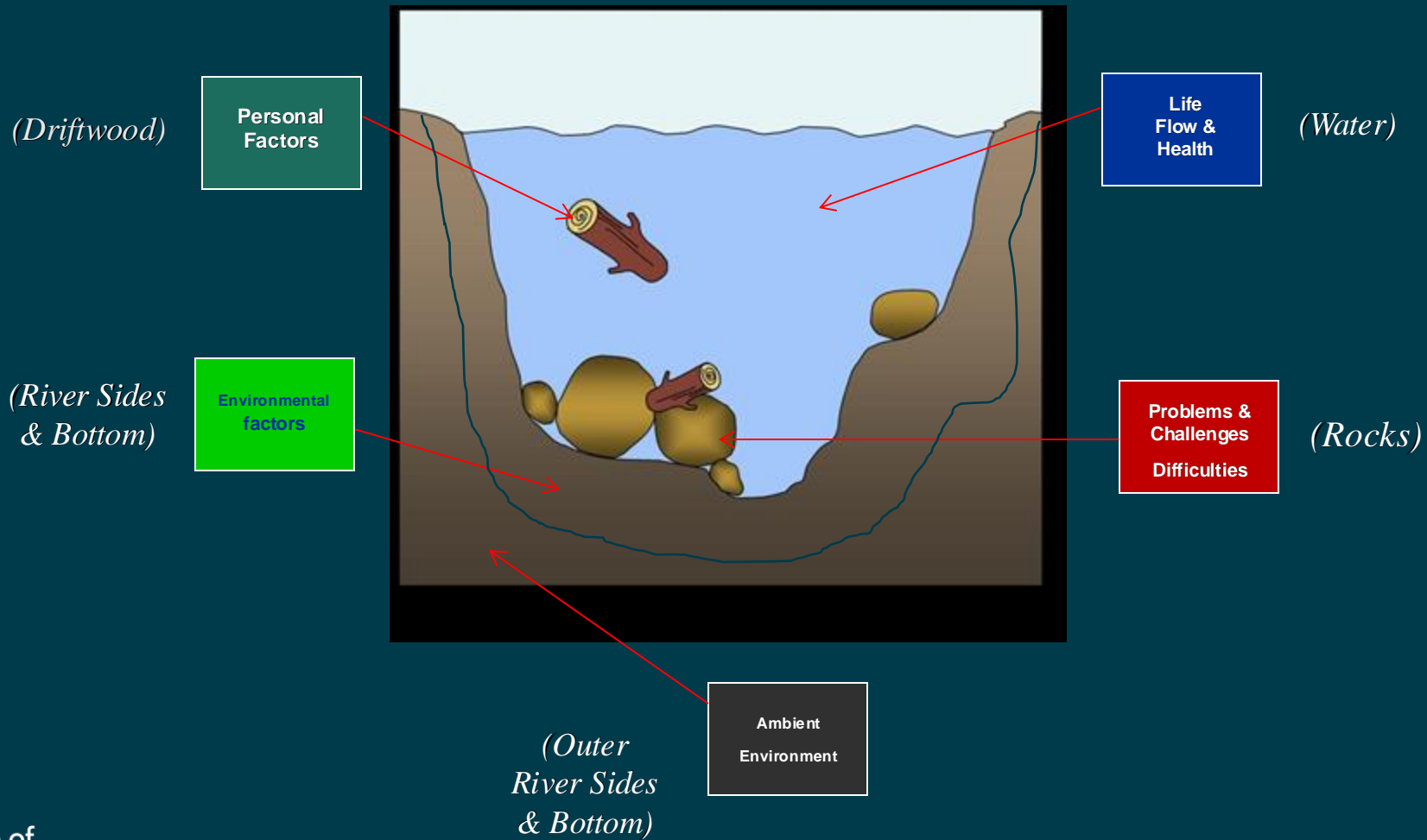


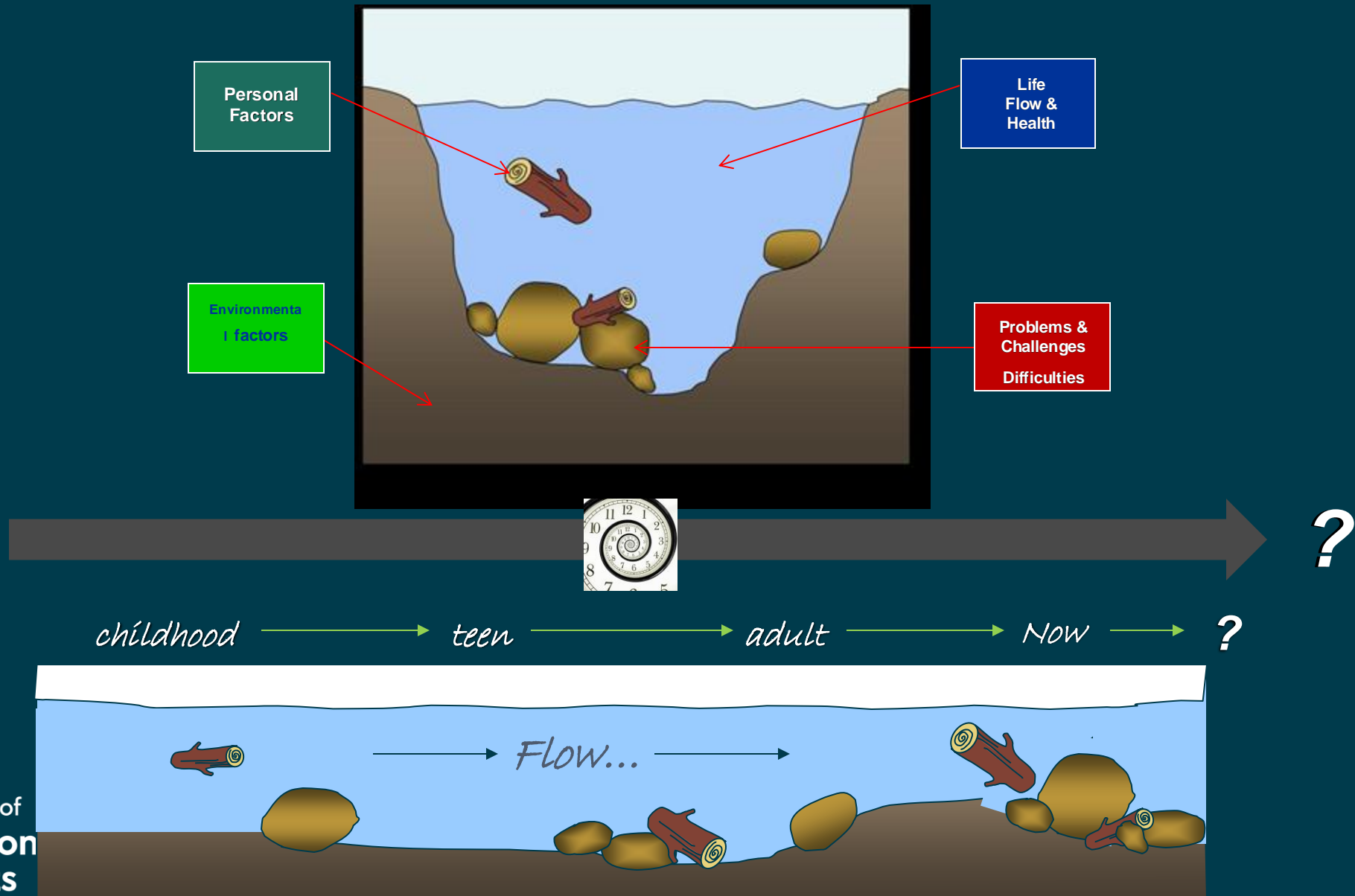
Figure 9.1. A river as a metaphor for a person's life journey. A cross-sectional view of the river at points along its length reveal different and unique configurations of the river's components.

from Hemphill B., Urish C. (2020). *Assessments in Occupational Therapy Mental Health: An Integrative Approach*, 4th Edition. Slack Incorporated

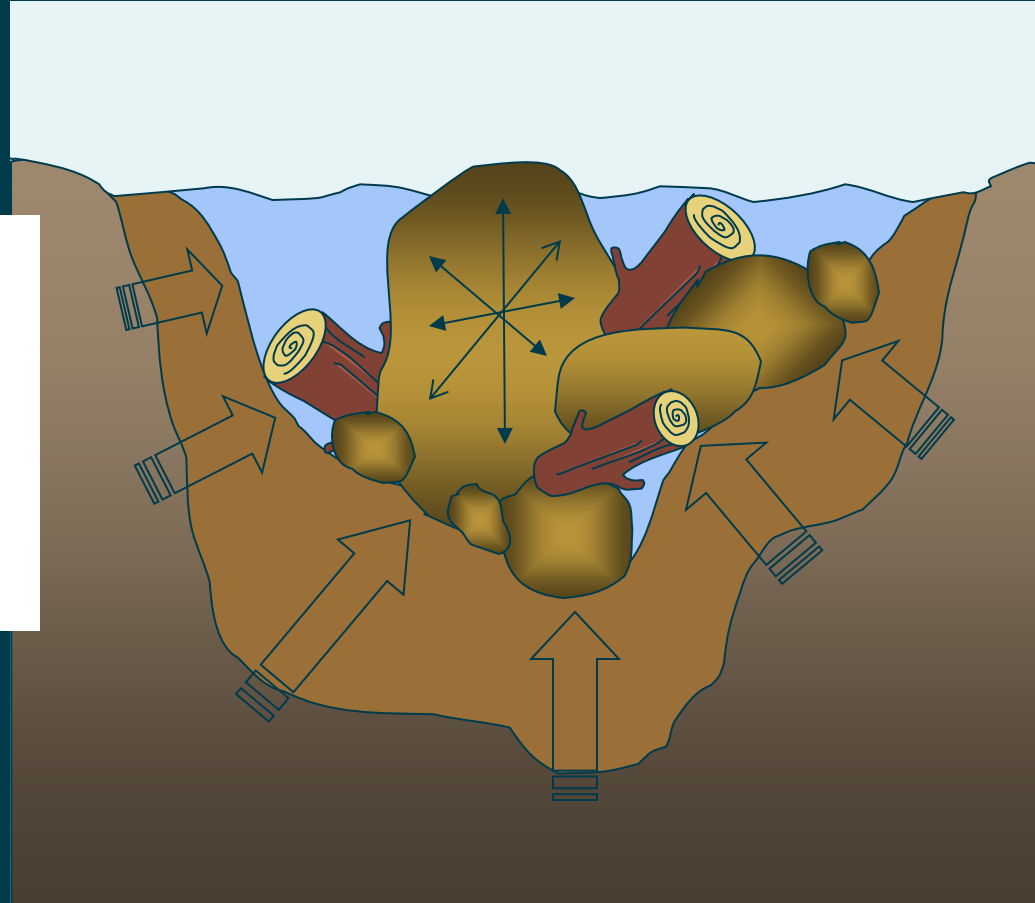
Kawa Model's cross-sectional view of the life course



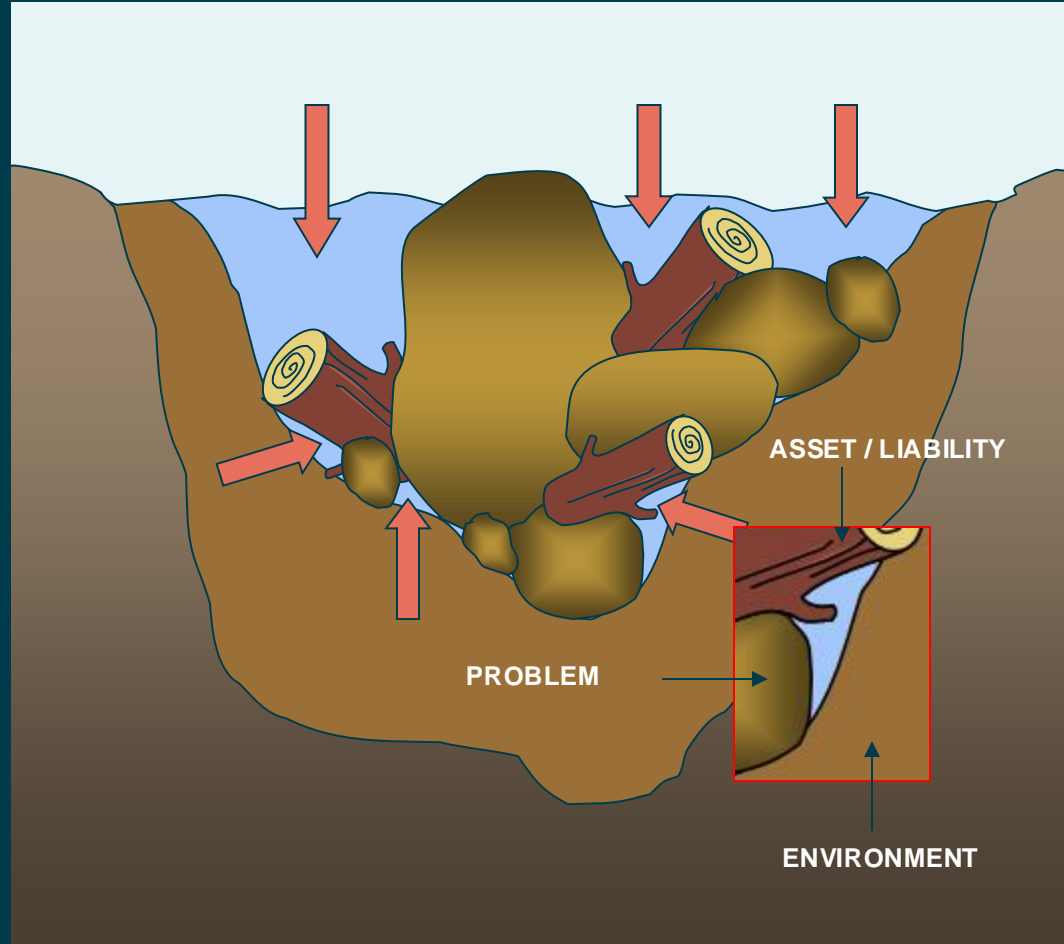
Kawa Model's Cross sectional and longitudinal view of the life course



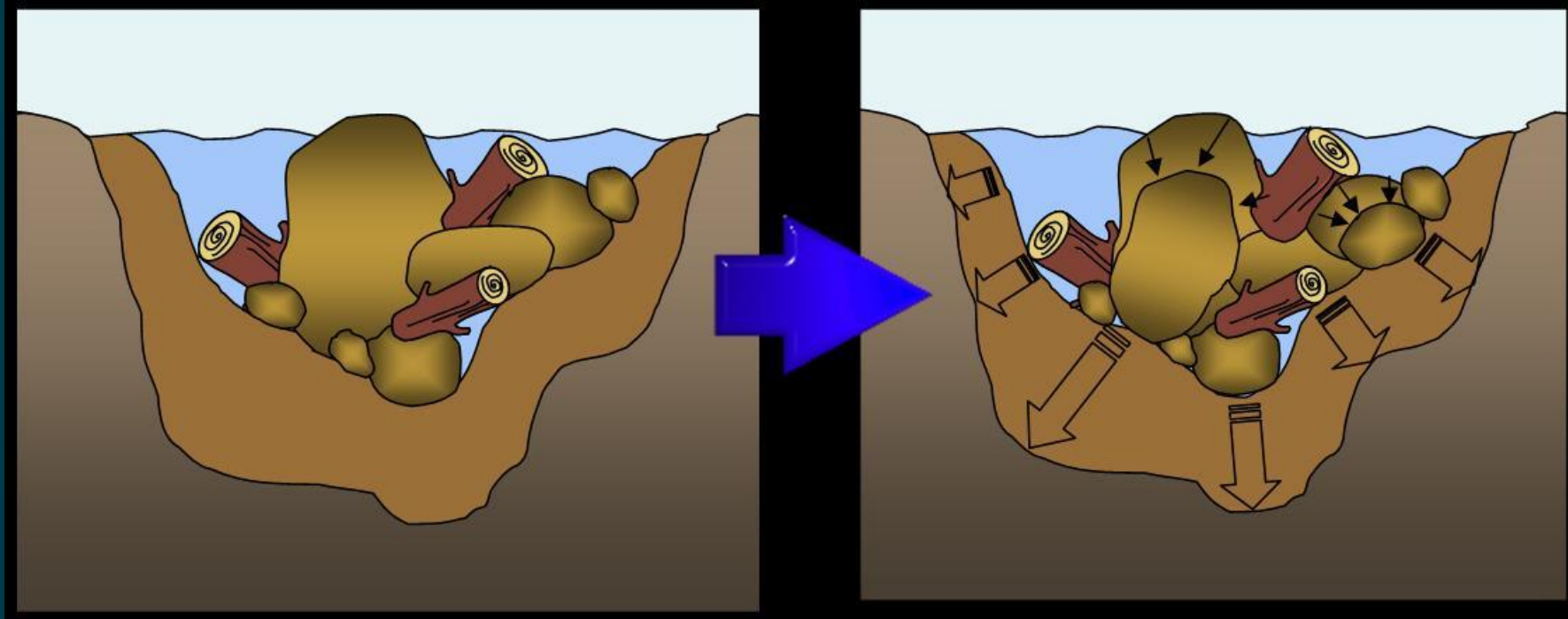
When Life Happens...



Social and environmental consequences/interplay

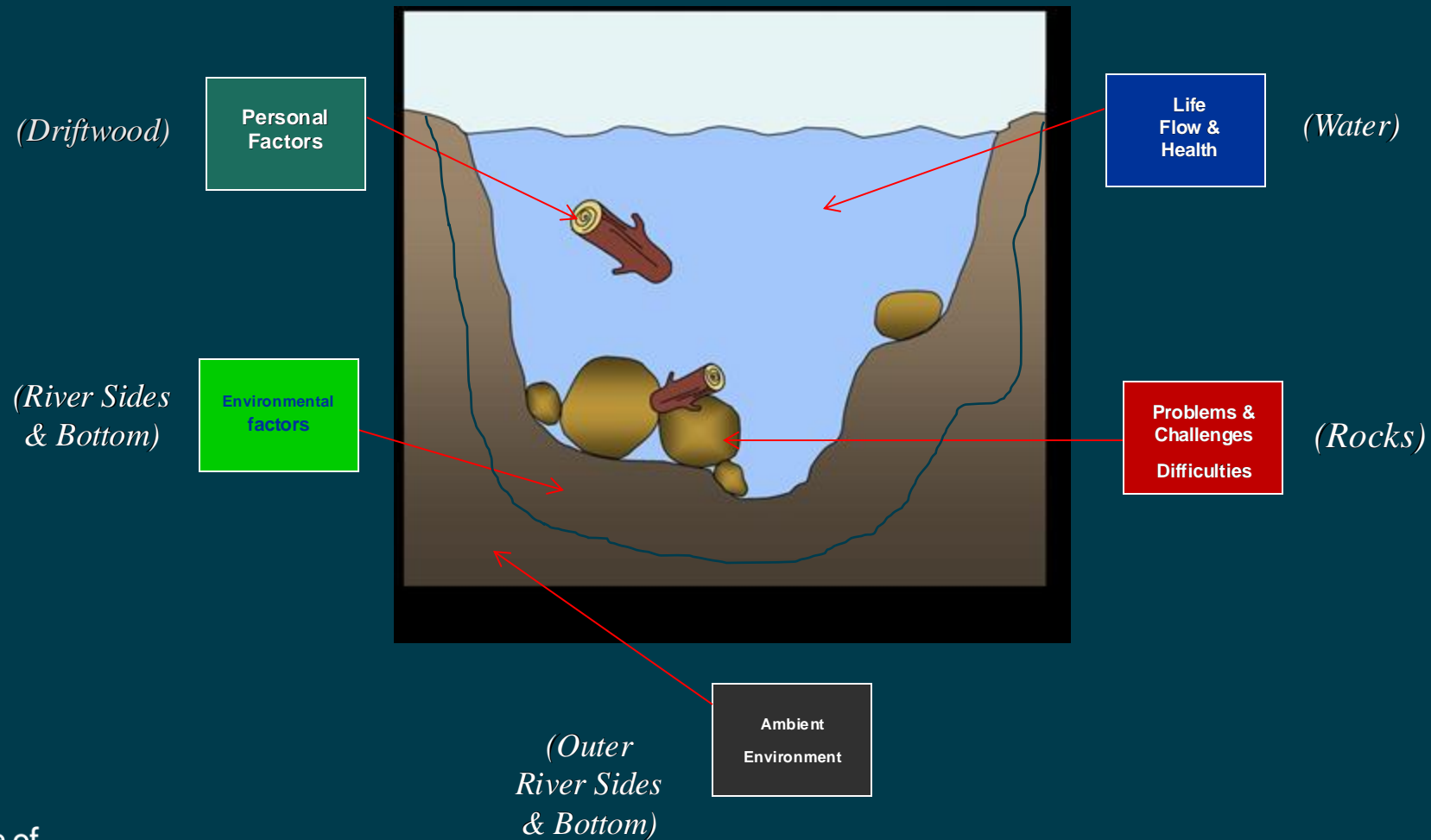


Occupational therapy in context of client or community's life



Occupational therapy; enabling and maximizing “Life Flow”

Kawa Model's cross-sectional view of the life course



Client/Patient - centered health-care practice...

Client is the **THEORIST**



Occupational Therapist becomes the **STUDENT**

The River as Common Metaphor



Occupational therapy's magnificent promise



to enable people, from all streams of life, to engage and participate in activities and processes of everyday life that matter.
to enable people to move toward their potential...

- Michael Iwama

Simply stated but so very difficult to deliver...

May your rivers flow powerfully & beautifully...



Kawamodel.com



Q&A

